

# MBOX 2 Series

## Distribution assemblies

**No. REFERENCE SERIES**
**656**

**VERSIONS**

**Possible installation:**

- 4 interlocked recessed sockets outlet belonging to the OMNIA Series 16A and 32A


**Possible installation:**

- 6 industrial sockets EUREKA Series 16A and 32A

**REFERENCE STANDARDS**

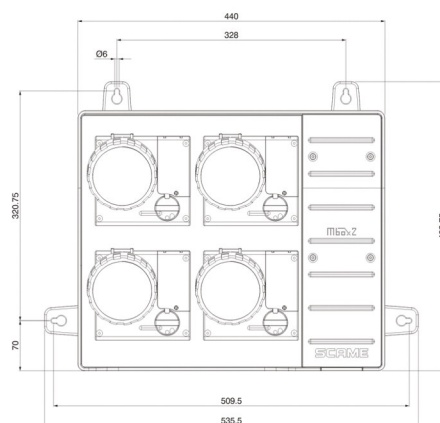
 Standards: **IEC 60670**  
**EN 60439-1**  
**EN 60439-4**
**MARKING**

 Marking: **CE Marking**

**QUALITY MARKS**

**TECHNICAL CHARACTERISTICS**

Protection degree: **IP66**  
**IP65 (version with emergency button)**  
 Operating temperature according to the reference standard: **-25°C+40°C**  
 Max operating temperature: **60°C**  
 Glow Wire test: **650°C**  
 Material: **Engineering plastic**  
 IK degree at 20°C: **IK08**  
 Cable inlet: **1xM25/M32**  
 Total insulation  : **YES**  
 Dissipable power according to CEI 23-49 standard: **-**  
 Power output: **max. 18KW**

**DIMENSIONS**

**BEHAVIOUR WITH CHEMICAL AND ATMOSPHERIC AGENTS**

Saline solution	Acids		Bases		Solvents				Mineral oil	UV rays
	Concentrated	Diluted	Concentrated	Diluted	Hexane	Benzol	Acetone	Alcohol		
<b>RESISTANT</b>	<b>LIMITED RESISTANCE</b>	<b>RESISTANT</b>	<b>LIMITED RESISTANCE</b>	<b>RESISTANT</b>	<b>NOT RESISTANT</b>	<b>NOT RESISTANT</b>	<b>NOT RESISTANT</b>	<b>LIMITED RESISTANCE</b>	<b>LIMITED RESISTANCE</b>	<b>RESISTANT</b>